

*La-Z-Boy Durable Series*

With the tapered seat from front to back you get a more roomy fit and unique style. Beneath the sculptured arm and base is space age plastics that give beauty, superior durability and unequalled strength. Special process on the surface inhibits dust retention. Following La-Z-Boy's tradition, you have an exceptional chair at a tremendous value, with all ergonomic design considerations.

*Truly tough and comfortable chairs.*

**High Back Executive Chair**

27" d x 23 3/4" w x 40 3/4" - 45" h

- Pneumatic seat lift

92253 ..... \$534



Pneumatic Stocked

**Guest Chair**

26" d x 23" w x 32 1/2" h

92252 ..... \$367



**CAN A CHAIR THIS DURABLE COST THIS LITTLE?**

Yes! Only La-Z-Boy's Durable chair has that graceful, yet sculptured appearance to which no other chair at this price can compare. The layered foam construction of each contoured back and seat give you that perfect support you expect; while the perimeter sewing allows the cushions to provide constant softness. The bottom line – this is a one-of-a-kind chair!

**Managerial Chair**

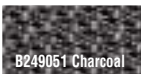
24 1/2" d x 23 3/4" w x 34 1/2" - 38" h

- Pneumatic seat lift

92255 ..... \$497



Pneumatic Stocked



**IN STOCK**

STOCKED in Black Frame Only

La-Z-Boy Durable Series

**LA Z BOY**  
CONTRACT FURNITURE GROUP